

# Problem solving with position

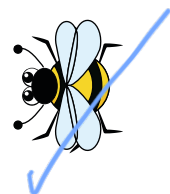
1 Here is a bee.



The bee makes a half turn.

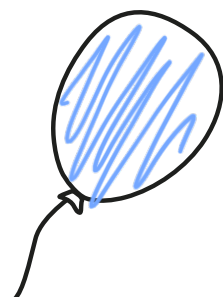
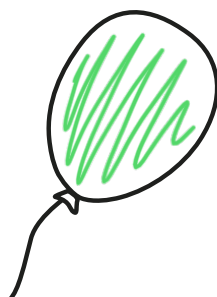
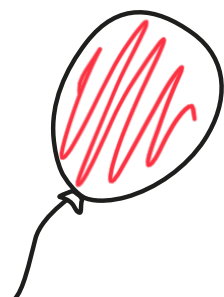
Which direction is the bee now facing?

Tick your answer.

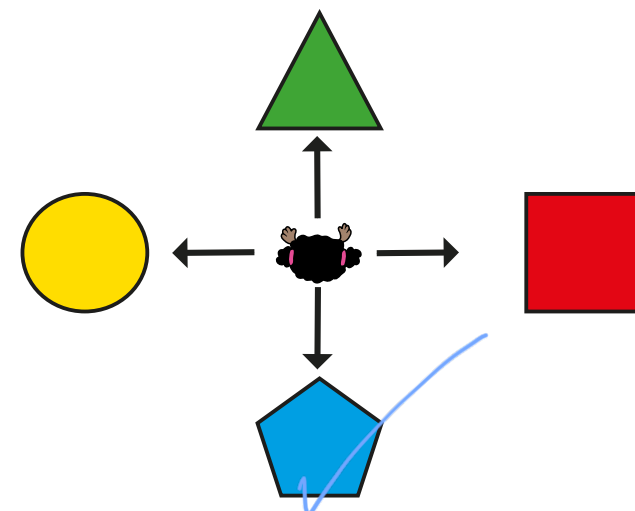


2 Colour the balloons.

- The red balloon is to the left of the green balloon.
- The balloon in the middle is green.
- The other balloon is blue.

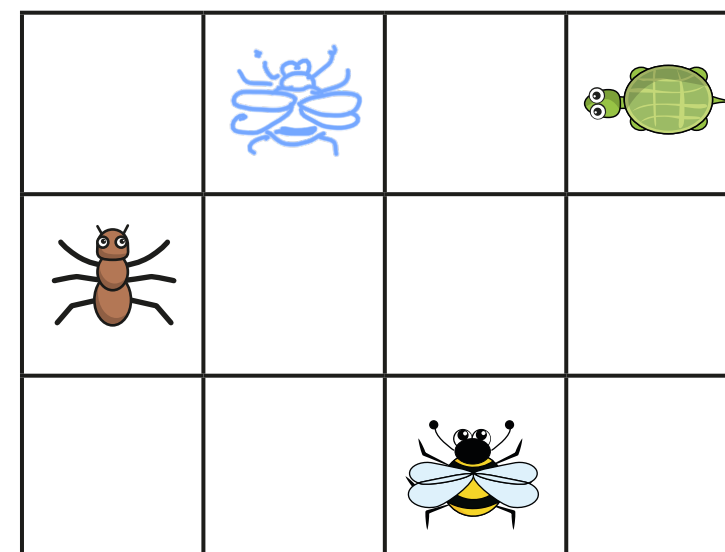


3 Whitney is facing the triangle.  
She makes a half turn.



Tick the shape that Whitney is now facing.

4 Here are some animals on a grid.



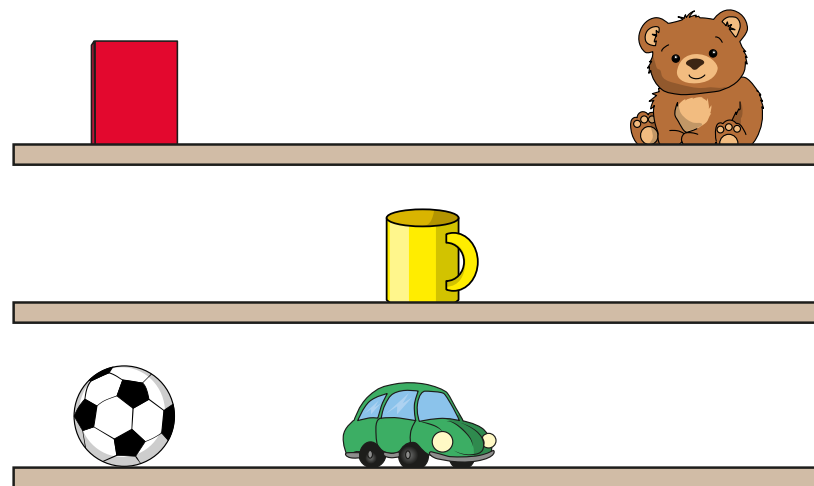
a) The bee moves 2 squares forward and 1 square left.

Draw the bee in its new position.

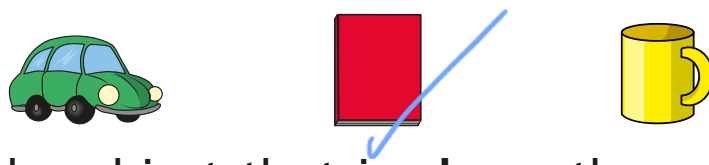
b) How can the tortoise move to the ant?  
Is there more than one way?



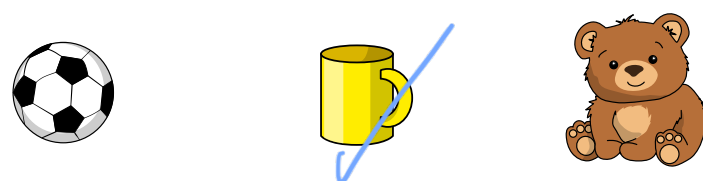
5 Here are some shelves.



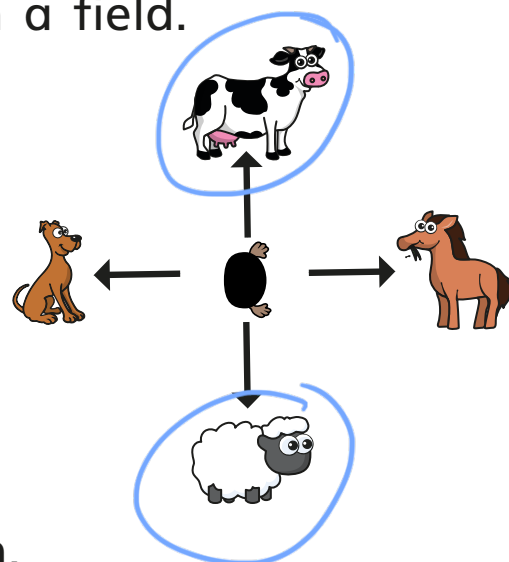
a) Tick the object that is on the **top** shelf.



b) Tick the object that is **above** the car.



6 There are four animals in a field.  
Mo is facing the horse.

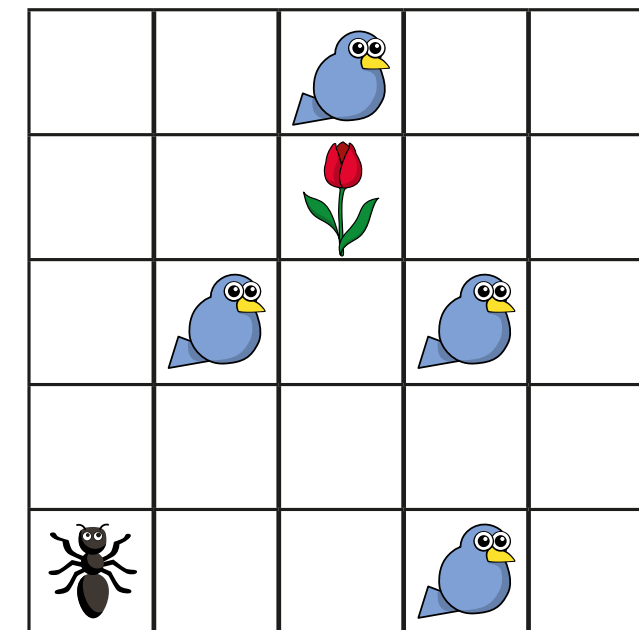


Mo makes a quarter turn.

- Circle the animals he could be facing now.
- Explain why there is more than one answer.

7 In a game, the ant must not land on the same square as a bird.

What path can the ant take to get to the flower?



a) Use the word bank to complete the sentences.

left forwards right

Move 3 squares forwards

Make a quarter turn right

Move 2 squares forwards

b) Describe another path for the ant to get to the flower.

Did you get the same answer as your partner?