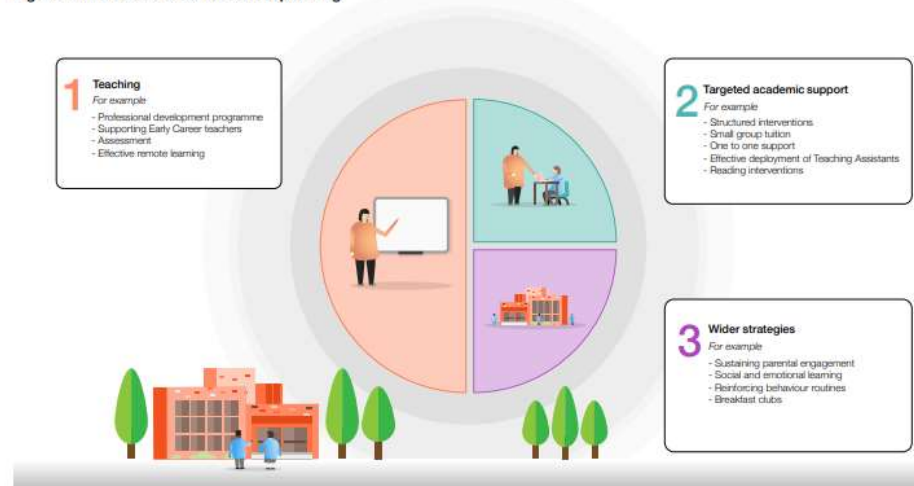


Pupil Premium Provision Mapping 2021 -22

The pupil premium is additional monies given to schools to support pupils who are considered disadvantaged. The measure for this is the entitlement of Free School Meals within the past 6 years. The current funding is approximately £31,720.00 in total. Every year, we have revisited the advice on Pupil Premium from the EEF to ensure our disadvantaged children have every opportunity to catch-up following the lockdowns. We are using the guidance from the Education Endowment Foundation to provide a tiered approach.

Figure 1: The tiered model for school planning



(The EEF Guide to Supporting School Planning: A Tiered Approach to 2020-21)

The vast majority of our usual provision works well within this model as you will see below. We use our assessment at the end of the year and careful thought of what we want the children to know in order for them to be ready to progress in the year. Interventions are reviewed on a termly basis and we aim for all disadvantaged children to have at least two short terms of 1:1 or 1:2 support.

1 Teaching

School Learning

Expert teachers develop a broad array of teaching strategies that, combined with subject and knowledge of the children positively impact on the learning.

Initiatives and CPD planned improve the components of high quality first teaching are a priority.

Attention will be given to effective diagnostic assessment and AFL will be a strong feature of all lessons

Clear progressive and engaging curriculum with clear year/key stage outcomes and opportunities to build cultural capital

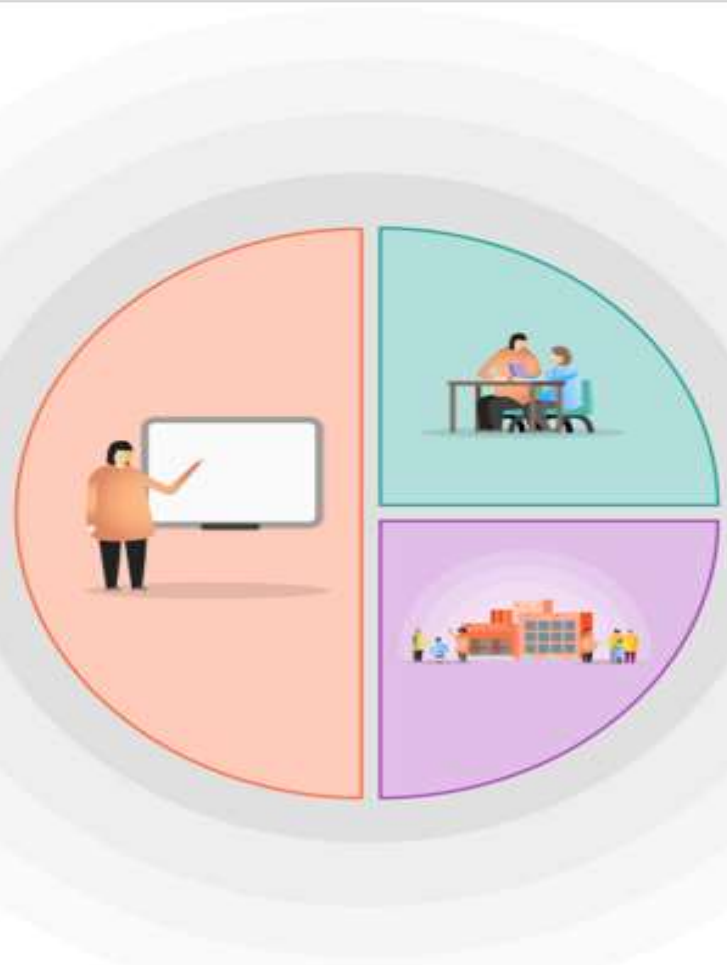
Home Learning: (Teams)

Focus on critical aspects we need to teach well. A package of home learning put together ensuring we focus on basic skills first and foremost. (Bug Club, Phonics Play, writing linked to the learning project, TT Rockstars and Mastery Maths)

Face-to-face teaching focusing on key ideas and setting up the home learning with modelling, explanations and immediate feedback—sharing the metacognitive steps needed to complete a task.

Home learning focuses on independent practice (with prompts and keywords provided) and short quizzes – all opportunities to embed concepts in the long-term memory.

Feedback on tasks given via face-to-face learning or through the online platform



2 Targeted academic support

In School:

Interventions used have clear evidence of impact (EEF Teaching and Learning Toolkit)

All interventions are time limited and linked to classroom learning

The timings of interventions given careful thought so children do not miss whole class learning

Home Learning

Vulnerable learners not in school receive graded support as indicated by monitoring system e.g. accessibility to a device, paper copies, extra phone calls to support learning and well-being, bespoke feedback.

3 Wider strategies

School and Home Learning

Based on strong relationships:

Communication with families (and staff) made easier by the strength of relationships already in place meaning that families trust the school's approaches and support the strategies in place for learning as well as well-being.

Focus on attendance and support families to have the best attendance and/or engagement virtually

Social and emotional support

Strong behaviour management (Attachment issues)

Enrichment activities for all children, provision of books and/or IT equipment

Every child will have their own provision from the menu below additional to the high quality first teaching in the class room.

Green = Academic – Targeted Academic Support
Blue - Enrichment/engagement – Wider Strategies
Orange = Well-being –Wider Strategies

Reading/ Phonics Intervention / Speech and Language Intervention (Talk Boost)/ 5 Minute Box

Overview: provision of LSA time to deliver intervention programmes to support children
Cost £ 16,800

Aim/outcomes:

To accelerate rates of progress in all subjects across all year groups

Maths Intervention

Overview: provision of LSA time to deliver First class @number and/or Plus 1 / Number Box
Cost £ 7,700

Aim/outcomes:

To accelerate rates of progress in all subjects across all year groups

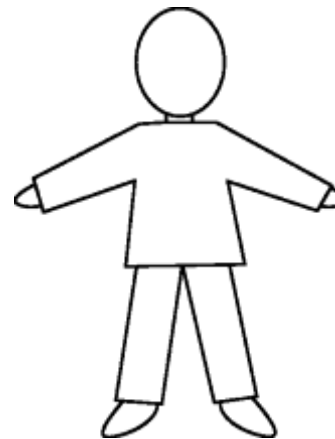
BOOK CLUB

Overview: Monies available through Join-Up, Join-In fund to buy books.

Cost: £2300

Aim/Outcome: To ensure every child has access to books and a love of reading.

SUPPORTING THE



WHOLE CHILD

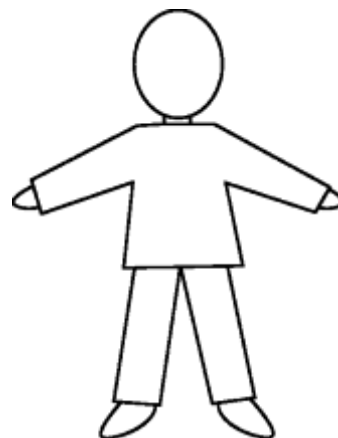
Learning Mentor

Overview: Access to regular check-ins and sessions with Learning Mentor

Cost: £ 4,140

Aim/Outcomes:

To promote a positive learning culture within school where all children are able and ready to tackle the learning of each and every day and manage social situations with increasing confidence.



Subsidised Trips

Overview: School trips and residential subsidised to ensure access for all pupils

Cost: £ 1,000

Aim/Outcomes:

Raise aspiration, motivation and engagement.

Improve behaviour. Give a purpose

SUPPORTING THE WHOLE CHILD

Extra-Curricular clubs / Join-Up,Join-in

Overview: Monies available to support children in their choice of After school clubs. £180 per child/ £400 for CLA

Cost £ 5300

Aims/outcomes: Provide equal opportunity for all children to access extra-curricular activities. Aimed to raise confidence and breadth of learning experiences and promote healthy active life-styles.

Milk Provision

Overview : All children have access to milk.

Cost £1200

Aims/outcomes: To ensure that all pupils entitled to Pupil Premium have access to good nutrition.

